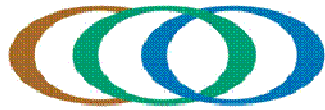


Northeast Chapter



International **Erosion Control** Association

2009 Conference & Trade Show

Innovations in Erosion and Sediment Control



October 27-29 • Hilton Hartford Hotel, CT

- Certification Review Courses (Oct 27 & 28) and Exams (Oct 29)
- Erosion and Storm Water Control Workshop (Oct 28) -
“Hands On” session for Attendees and Exhibitors
- Presentations, Panels and Case Studies (Oct 27 & 28)

COMPLIMENTARY ACCESS TO THE TRADE SHOW (Oct 27, 1-5 p.m.)

CONNECT  **EDUCATE**  **SUPPORT**



PROGRAM OVERVIEW

Tuesday October 27th:

- Room 1: Presentations
- Room 2: Presentations
- Room 3: Certified Professional in EROSION & SEDIMENT CONTROL® Exam Review Course
- Exhibit Hall: Trade Show *open all day*
COMPLIMENTARY ACCESS to the Trade Show Hall from 1-5 p.m.

Tuesday evening in the Exhibit Hall :

- IECA Northeast Chapter Annual Membership Meeting -
agenda includes Board of Directors Elections and discussion of 2010 educational program
- Environmental Jeopardy
- Door Prize: FREE One-Year of Professional Membership to IECA (a \$170 value!!)

Wednesday October 28th:

- Room 1: Presentations
- Room 2: Certified Professional in STORM WATER QUALITY® Exam Review Course
- Room 3: Certified EROSION, SEDIMENT AND STORM WATER INSPECTOR™ Exam Review Course
- Exhibit Hall: trade show *and* Erosion Control & Storm Water Quality Workshop

Thursday October 29th:

- CPESC®, CPSWQ® and CESSWI™ Certification EXAMS
*Certification candidates must be **PRE-APPROVED** by EnviroCert International to sit for an exam IN ADDITION TO registering with the NEC to take the exam in Hartford.*

EXHIBITORS *as of October 4th*

- Groundscapes Express, Inc. www.groundscapesexpress.com
- PermiTrack - The web-based home for your NPDES permit www.mynpdespermit.com
- Terre Hill Stormwater Systems www.terrestorm.com
- A.P.L.E.T.S. Water Quality Software by Trinkaus Engineering www.trinkausengineering.com
- Chemstar Products *starch-based polymers* www.chemstar.com
- Northeast Environmental Solutions www.tlc-nes.com
- ACF Environmental acfenvironmental.com
- Everett J. Prescott, Inc. www.ejprescott.com
- CBI Systems, Ltd. www.cbi-systems.com
- Propex Erosion Control Solutions www.sind.com

Information about Exhibitor benefits and the **NEC'09 Exhibitor Registration Form** are posted at
www.ieca-nechapter.org/nec09/exhibitor.html.

P R E S E N T A T I O N S

TUESDAY OCTOBER 27TH

- **Regulatory Roundup** - overviews & updates of stormwater management and related programs from EPA Region I, the six New England states and New York

After the morning break, concurrent presentations will be held in 2 rooms

Room 1

- **Phasing, Sequencing and the Regulatory Process - A Team Approach to the Design of Working Construction Plans** *Randall Shuey, CPESC, CESSWI, CWS (New England Environmental)*
- **Permeable Pavement Demonstration at EPA Edison Environmental Center** *Amy A. Rowe (post-doctoral EPA fellow)*
- **The Effects of Rain Garden Size on Hydrological Performance at the EPA's Edison Environmental Center** *Emilie K. Stander (EPA)*
- **The Stormwater Maze – Twisting and Turning to Improve Stormwater Quality** *Terri-Ann Hahn, RLA, CPESC, CPSWQ (LADA, PC Land Planners)*
- **The Evolution of Jobsite Erosion Control Technology** *Pete Hanrahan, CPESC (Everett J. Prescott, Inc.)*

Room 2

- **Applications and Technical Guidance for the Use of Anionic Polyacrylamide (PAM) Flocculants in Soil Erosion Control and Storm Water Clarification** *Mark Thrum and Seavey (Seamark Technologies, LLC)*
- **A Design, Operations and Cost Overview of Advanced Treatment Systems** *Joe Gannon (Clear Creek Systems, Inc)*
- **Use and Application of Geosynthetics** *Warren Cohn, CPESC (ACF Environmental)*
- **Good, Bad and Ugly of E&SC Measures in the Field: What Works, What Doesn't and Why** *Sean Hayden, CPESC (Northwest Conservation District)*
- **The Role of Conservation Districts for the Issuance of Certifications for the Discharge of Storm Water from Construction Sites and Dewatering Operations** *David Askew (North Central Conservation District) and CT DEP TBA*

WEDNESDAY OCTOBER 28TH

- **Panel Discussion: Certified Professional in Storm Water Quality (CPSWQ) and Professional Engineer Certifications** - experience and education necessary to become a CPSWQ; components of a storm water treatment system that a CPSWQ can design; conflicts as a CPSWQ with professional laws for licensed engineers; potential liabilities for CPSWQ's who are not licensed engineers (who pays when the system does not work as designed or fails) and more. *Moderator: Sean Hayden, CPESC (Northwest Conservation District)*
· *CPSWQ Program Overview: David Ward (EnviroCert International, Inc.)* · *Panelists will include: Steve Trinkaus, PE, CPESC, CPSWQ (Trinkaus Engineering, LLC); Robert Jontos, CPESC (Land-tech Consultants) and Mickey Marcus, PWS, CPESC, CPSWQ (New England Environmental)*
- **Gilboa Dam Reconstruction Site: A Case Study using a Variety of Inventive Erosion, Sediment and Stormwater Controls to protect Natural Resources** *Jennifer Cass, PE, LEED AP (Hazen and Sawyer, PC)*
- **Erosion Control and Storm Water Quality Workshop** - participants will use either a residential subdivision or a commercial site plan showing proposed development with grading, but no E&SC measures or storm water design. Attendees will work in small groups with exhibitors to address erosion and storm water quality issues.

Participants' plans and the actual design for the sites will be compared and discussed.



Certified Professional in Erosion & Sediment Control ®

Exam Review Course ~6.75 hours towards credits*

Tuesday October 27, 8:30 a.m. to 4:45 p.m.

Instructors: J. Eric Scherer, CPESC, CESSWI, CPSWQ
and Randall Shuey, CPESC, CESSWI, PWS



Course Outline all times are approximate

Site Planning and Management ~45 minutes

Rules and Regulations ~60 minutes

Erosion Prediction ~90 minutes

Runoff Management ~90 minutes

Soil Stabilization (Erosion Control) ~60 minutes

Sediment Control ~60 minutes

* The credit received for this class *if any* varies by program
- check with your program operator for more information.

For the full outline, go to www.cpesc.org/cc-products/cpesc-review-outline.asp.

Study Guide Table of Contents

Section 1 Rules and Regulations

Section 2 Site Planning and Management

Section 3 Erosion Prediction

Section 4 Runoff Control

Section 5 Soil Stabilization (Erosion Control)

Section 6 Sediment Control

Tables, Figures & Appendices

Note:

**This class is OPEN TO ALL
- one does not need to be
in the certification pipeline
to benefit from this useful
information.**

The CPESC® EXAM STUDY GUIDE Table of Contents, including full list of Tables, Figures and Appendices, is posted at www.cpesc.org/cc-products/wkbk-toc.asp.

For more information about the CPESC® Program, go to www.cpesc.org.

CPESC® Program Manager: John K. Brown · (828) 655-1600 · john@cpesc.org

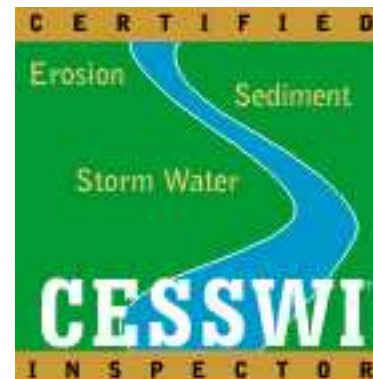


Certified Erosion, Sediment and Storm Water Inspector™

Exam Review Course ~6.5 hours towards credits*

Wednesday October 28, 8:30 a.m. to 4:30 p.m.

Instructors: David Ward, CESSWI, CPESC
and Randall Shuey, CESSWI, CPESC, PWS



Study Guide Table of Contents

Section 1 Rules and Regulations

Section 2 Safety

Section 3 Communication

Section 4 Documentation

Section 5 Inspector Duties

Section 6 Plan Management

Section 7 Best Management Practices

Appendix A: Glossary of Terms

Appendix B: Sample Inspection Report

Appendix C: CESSWI Exam Review Evaluation

* The credit received for this class *if any* varies by program
- check with your program operator for more information.

Note:

**This class is OPEN TO ALL
- one does not need to be
in the certification pipeline
to benefit from this useful
information.**

The CESSWI™ EXAM STUDY GUIDE Table of Contents is posted at www.cesswi.org/ci-products/wkbk_toc.asp.

(Sorry, the CESSWI Exam Review Course Outline is not posted at this time.)

For more information about the CESSWI™ Program, go to www.cesswi.org.

CESSWI™ Program Manager: Glenda F. Carmney · (828) 655-1600 · glenda@cesswi.org

CPESC, CESSWI AND CPSWQ CERTIFICATION EXAMS: THURSDAY OCTOBER 29TH

Check In at 8 a.m. • EXAMS BEGIN AT 8:30 a.m. (duration varies by type of exam)

You must be pre-approved by EnviroCert International, Inc., to sit for these certification exams; AND you must register with the IECA Northeast Chapter to take the exam in Hartford, CT, on the 29th.

Approved Calculators: www.ncees.org/exams/calculators/



Certified Professional in Storm Water Quality ®

Exam Review Course ~7 hours towards credits*

Wednesday October 28, 8:30 a.m. to 5 p.m.

Instructor: Donald Lake, CPSWQ, PE, CPESC



Course Outline *all times are approximate*

Pollutants in Storm Water Runoff ~ 60 minutes

Rules and Regulations ~60 minutes

Watershed Hydrology ~90 minutes

Quantification ~90 minutes

Erosion and Sediment Control Measures ~60 minutes

Water Quality Stormwater Management Practices for Urbanized Areas ~60 minutes

For the full outline, go to www.cpswq.org/cq-products/cpswq-review-outline.asp.

* The credit received for this class *if any* varies by program
- check with your program operator for more information.

Study Guide Table of Contents

Section 1 Introduction

Section 2 Pollutants in Storm Water Runoff

Section 3 Rules and Regulations

Section 4 Site Planning and Management

Section 5 Watershed Hydrology

Section 6 Quantification

Section 7 Erosion and Sediment Control Measures

Section 8 Water Quality BMP's for Urbanizing Areas

Section 9 Selection of Best Management Practices

Appendix A: Glossary of Terms Appendix B: Regulatory Guidance

Appendix C: Selection of SMPs Appendix D: CPSWQ Workbook References

The CPSWQ® EXAM STUDY GUIDE Table of Contents is posted at www.cpswq.org/cq-products/wkbk-toc.asp.

For more information about the CPSWQ® Program, go to www.cpswq.org.

CPSWQ® Program Manager: David H. Ward · (828) 655-1600 · david@envirocertintl.org

Note:

**This class is OPEN TO ALL
- one does not need to be
in the certification pipeline
to benefit from this useful
information.**



SPONSORSHIP OPPORTUNITIES

NEC'09 Sponsors will be acknowledged in the CONFERENCE FOLDER, in at least one NEC NEWSLETTER and on the NEC'09 SPONSORS WEB PAGE. Sponsor info will remain posted for at least a year.

Lunch	total	\$1500one day	\$750
Parking.....	total	\$1350.....	one day	\$675
Breakfast	total	\$1000	one day	\$500
Major Sponsor				\$1000
Audio/Visual	total	\$750.....	one day	\$325
Promotional Mailings.....				\$600
Signs				\$500
Conference Folders.....				\$250
General Support.....				\$250
Networking Breaks (4) each.....				\$200
Reception.....				\$2000

(Tuesday evening - not currently on the program)



Sponsorship of Certification Exam Review Courses and Certification Exams is being provided by EnviroCert International, Inc.

To offer your financial support or for more information about sponsorship, please visit www.ieca-nechapter.org/nec09/sponsors.html or write to Christine Odiaga at nec09@ieca-nechapter.org.

NEC'09 REGISTRATION FEES

ATTENDEE Fees are LOWER than in 2008!

Standard Rates

Oct 7 - Oct 21	Gov/Student	Member	Other
Presentations	\$50	\$95	\$105
Review Course	\$110	\$160	\$170

"11th Hour" Rates

Oct 22/beyond	Gov/Student	Member	Other
Presentations	\$50	\$100	\$115
Review Course	\$110	\$175	\$190

Certification EXAMS: (MUST BE PRE-APPROVED)

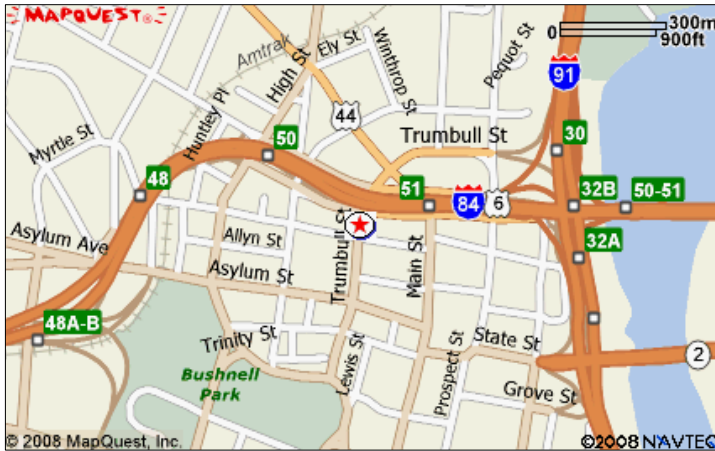
If registered for a REVIEW at NEC'09	No Charge
If NOT registered for a Review	\$25
Oct 22 & beyond / NO Review	\$35

EXHIBITORS (each space includes a 6'x3' draped table and electricity) **OVERSIZED** exhibits: register for additional space.

1 Space (includes 1 registration for presentations)	\$300
2 Spaces (incl. 2 registrations for presentations)	\$500
3 Spaces (incl. 3 registrations for presentations)	\$650
Additional Staff (per person, PER DAY)	\$50



The venue for NEC'09 is the **HILTON HARTFORD HOTEL**, conveniently located at the intersection of I-84 and I-91 in Hartford, Connecticut. The Hilton has agreed to provide **COMPLIMENTARY PARKING** for all registered participants in the underground parking garage. *Note: after taking your parking lot ticket, follow the sign pointing to the Hilton's section of the garage.*



[Hilton Hartford Hotel](#)

315 Trumbull Street, Hartford, CT 06103

Phone: (860) 728-5151

Reservations: (800) 445-8667

The Hilton website provides driving directions with an interactive map at http://www1.hilton.com/en_US/hi/hotel/HFDHFFF-Hilton-Hartford-Connecticut/directions.do.

A [Yellow Pages Distance Search for Lodgings within 10 Miles](#) of the NEC'09 venue turns up a lot of lodging options, including two **shoe-string specials** - rooms for less than \$50 within 3 miles of the venue (*as of Oct 6, tax not included*). For the distance search and other links to **travel and visitor information** such as a [Bradley Airport \(BDL\)](#) (~20 miles away), [Union Station](#) (the transit hub for rail, bus, limo and shuttle service), [Amtrak](#), [Peter Pan](#) and [Greyhound](#), the free [Downtown Star Shuttle](#), the [Hartford Visitors Bureau](#) and [Downtown Hartford Services](#), please visit the NEC'09 "Location" web page at <http://www.ieca-nchapter.org/nec09/location.html>.

